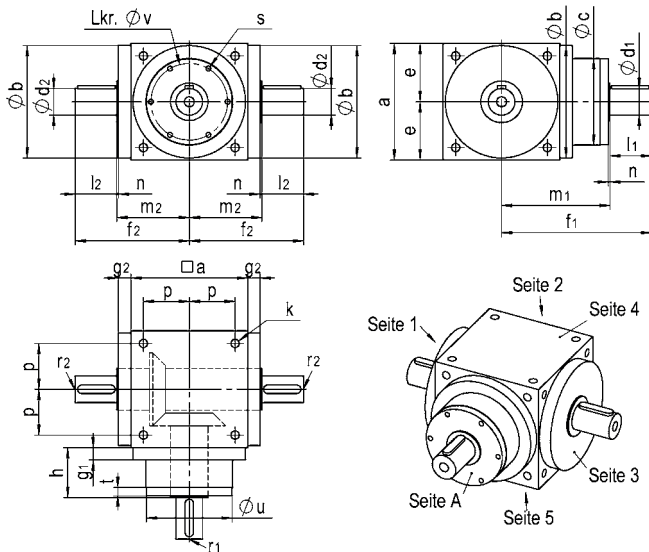
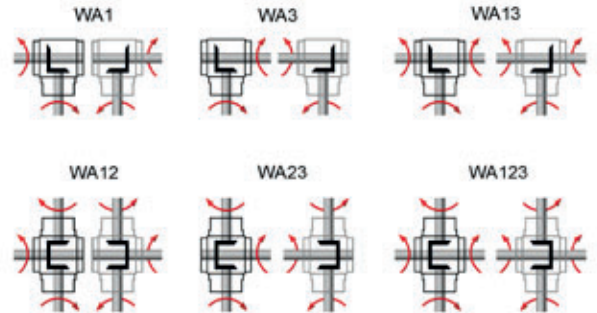


Abmessungen und Wellenanordnungen HS-Version Bauform L

POWER GEAR^{HS}



jeweils rechte Ansicht = gespiegelte Darstellung



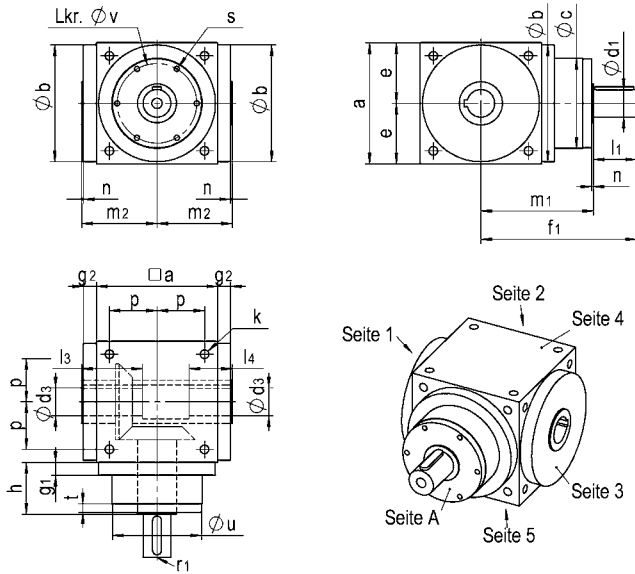
	S75L	S90L	S110L	S140L	S170L
a	75	90	110	140	170
Øb _{h7}	73	88	108	135	165
Øc	72	86	106	104	128
Ød _{1 k6}	12	16	18	22	32
l ₁	26	30	35	40	50
Ød _{2 k6}	12	16	18	22	32
l ₂	26	30	35	40	50
e	37,5	45	55	70	85
f ₁	116	130	150	170	205
f ₂	75,5	87	102	122	149
g ₁	15	15	15	15	15
g ₂	10	10	10	10	12
h	52,5	55	60	60	70
k	M6x12	M6x12	M8x15,5	M10x19,5	M12x23
m ₁	90	100	115	130	155
m ₂	49,5	57	67	82	99
n ₁	2	2	2	2	2
n ₂	2	2	2	2	2
p	30	36	44	55	67
r ₁ *	M4	M5	M6	M8	M12
r ₂ *	M4	M5	M6	M8	M12
s	4xM5x9	4xM5x12	6xM6x12	6xM6x12	6xM8x16
t	8	8	8	10	10
Øu _{g6}	72,9	87	107	107	127
Øv	62	76	92	92	114
Passfeder _{d1} **	4x4x20	5x5x25	6x6x28	6x6x32	10x8x45
Passfeder _{d2} **	4x4x20	5x5x25	6x6x28	6x6x32	10x8x45

* nach Form D, DIN332

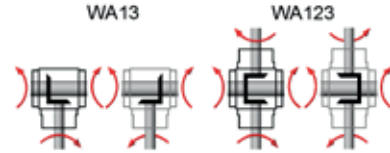
** Passfeder nach DIN6885/1

Abmessungen und Wellenanordnungen HS-Version Bauform H

POWER GEAR^{HS}



rechte Ansicht = gespiegelte Darstellung



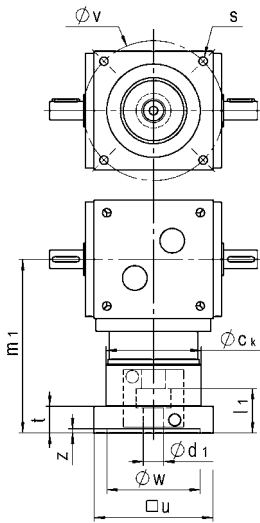
	S75H	S90H	S110H	S140H	S170H
a	75	90	110	140	170
Øb_{h7}	73	88	108	135	165
Øc	72	86	106	104	128
Ød_{1 k6}	12	16	18	22	32
l₁	26	30	35	40	50
Ød_{3 H7}	12	14	18	22	32
l₃	42	49	61	70	85
l₄	30	30	35	35	50
e	37,5	45	55	70	85
f₁	116	130	150	170	205
g₁	15	15	15	15	15
g₂	10	10	10	10	12
h	52,5	55	60	60	70
k	M6x12	M6x12	M8x15,5	M10x19,5	M12x23
m₁	90	100	115	130	155
m₂	49,5	57	67	82	99
n₁	2	2	2	2	2
n₂	2	2	2	2	2
p	30	36	44	55	67
r₁*	M4	M5	M6	M8	M12
s	4xM5x9	4xM5x12	6xM6x12	6xM6x12	6xM8x16
t	8	8	8	10	10
Øu_{g6}	72,9	87	107	107	127
Øv	62	76	92	92	114
Passfeder_{d1}**	4x4x20	5x5x25	6x6x28	6x6x32	10x8x45
Passfedernut_{d2}**	4x4	5x5	6x6	6x6	10x8

* nach Form D, DIN332

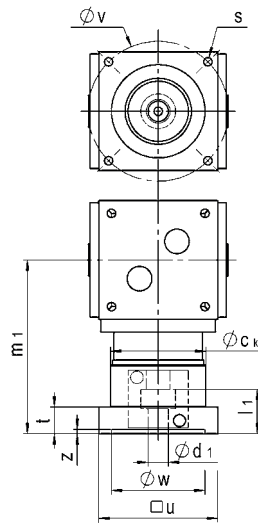
** Passfeder/Passfedernut nach DIN6885/1

Abmessungen Antrieb HS-Version Bauform KL/KH

POWER GEAR^{HS}



Bauform KL



Bauform KH

Größe	Variante	Ød ₁	l ₁	□u	Øv	Øw ^{F7}	s	m ₁	t	z	Øc _k
S75	V1	9	20	75	63	40	M4	146,5	25	5	77
	V2	11	23	75	75	60	M5	146,5	25	5	77
	V3	14	30	90	100	80	M6	146,5	25	5	77
S90	V1	11	26	90	75	60	M5	166,5	25	5	92
	V2	14	30	90	75	60	M5	166,5	25	5	92
	V3	14	30	90	95	70	M6	166,5	25	5	92
	V4	14	30	90	100	80	M6	166,5	25	5	92
	V5	19	40	90	95	70	M6	166,5	25	5	92
	V6	19	40	90	100	80	M6	166,5	25	5	92
	V7	19	40	115	130	95	M8	166,5	25	5	92
	V8	19	40	115	115	95	M8	166,5	25	5	92
S110	V9	24	50	115	130	110	M8	173	31,5	5	92
	V1	14	30	110	95	80	M6	184,5	26	5	112
	V2	14	30	110	100	80	M6	184,5	26	5	112
	V3	19	40	110	100	80	M6	184,5	26	5	112
	V4	19	40	115	115	95	M8	188	29,5	5	112
	V5	19	40	115	130	95	M8	188	29,5	5	112
	V6	19	40	115	130	110	M8	190	31,5	5	112
	V7	24	50	115	130	110	M8	190	31,5	5	112
	V8	24	50	140	165	110	M10	190	31,5	5	112
	V9	24	50	140	165	130	M10	205	21,5	5	112
S140	V10	32	60	140	165	130	M10	205	21,5	5	112
	V1	19	40	115	115	95	M8	203	29,5	5	112
	V2	19	40	115	130	95	M8	203	29,5	5	112
	V3	24	50	115	130	110	M8	205	31,5	5	112
	V4	24	50	140	165	110	M10	205	31,5	5	112
	V5	24	50	140	165	130	M10	220	21,5	5	112
	V6	32	60	140	165	130	M10	220	21,5	5	112
	V7	32	60	190	215	130	M12	221	22,5	6	112
	V8	32	80	190	215	180	M12	235	36,5	6	112
S170	V9	38	80	190	215	180	M12	235	36,5	6	112
	V1	24	50	140	165	110	M10	241	28,5	5	135
	V2	24	50	140	165	130	M10	244	31,5	5	135
	V3	32	60	140	165	130	M10	244	31,5	5	135
	V4	32	60	190	215	130	M12	262,5	26,5	6	135
	V5	32	60	190	215	180	M12	264	28	6	135
V6	38	80	190	215	180	M12	264	28	6	135	